

# VISTAS

GURGAON

unitech



VISTAS

Experience the magic of "Vistas".

An unmatched level of excellence defines the magnificent towers against a clear blue sky. Let your eyes soak in the panoramic views of its landscaped surroundings. Discover green, serene surroundings with your choice of 2 & 3 bedroom apartments without giving the pulse of the city a miss.

Experience exclusivity, combined with every convenience that you need for a delightful contemporary living; sink into a truly exceptional lifestyle.





Most of our projects are conceived and designed by international architects such as JTC Intl., HOK and Callison.



Uniwold Gardens, Noida

Signature Towers, Gurgaon

The Residences, Gurgaon

The Great India Place, Noida

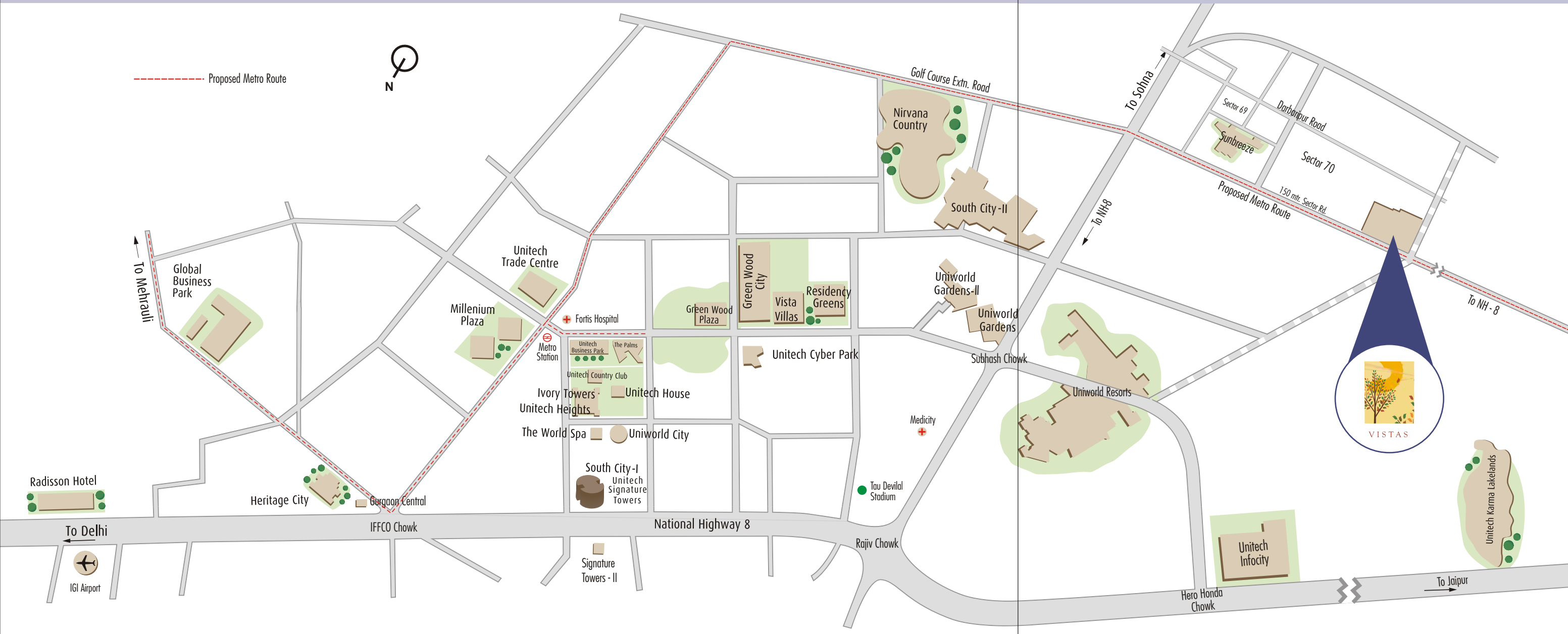
Established in 1972, Unitech today is India's leading real estate company with projects across the country. Unitech has a pan-India footprint with projects in Delhi NCR, West Bengal, Punjab and Maharashtra, with an endeavour to attain leadership in every market it operates in. Unitech's developments have the most diversified product mix comprising of Residential, Commercial, Retail, IT Parks, SEZs, Hotels, Schools & Amusement Parks. Unitech is known for the quality it delivers and is the first real estate developer to attain ISO 9001:2008 certification in North India.

Our well-managed architectural and engineering teams have closely worked and partnered with internationally acclaimed architects such as Callison (USA), SWA, HOK (USA) and many others, to achieve both aesthetic and efficient design, and have adopted best practices that exude superior quality of construction in our developments.

At present, Unitech has more than 30 major ongoing residential projects in cities such as Delhi NCR, Mumbai, Kolkata, Chennai, Bangalore, Mohali and Lucknow.



# Location Map



Explore nature's bounty coupled with the benefits of an urban life.

- Well connected to N.H. 8 & Golf Course Extn. Road
- Excellent connectivity to Gurgaon - NCR through the upcoming Metro
- Proximity to residential, retail and commercial developments on Sohna Road & Nirvana Country
- World class schools such as Shikshantar, The Shri Ram School, DPS, Amity International, Heritage, Pathways & GD Goenka within 25 minutes driving distance
- Leading hospitals such as Medicity, Artemis, Max, Fortis, Apollo, Sir Gangaram & Batra Hospital within 25 minutes driving distance





# Master Plan



## LEGEND

- 1 Entry / Exit
- 2 Central Green with Basement Parking
- 3 Surface Parking
- 4 Club House
- 5 Swimming Pool
- 6 Kid's Play Area
- 7 Social Housing
- 8 Nursery School





# Key Plan



## KEY PLAN

- 1 Club House
- 2 Swimming Pool
- 3 Kid's Play Area
- 4 Central Green with Basement Parking
- 5 Surface Parking

A1 to A11 Ground + 13







Perspective view of Vistas - Gurgaon

This is an artist's rendition and may undergo modifications.





Tone your soul  
to its natural  
rhythm



At the heart  
of it all and  
yet apart

Presenting a heaven of space & serenity to get away from your worries.

- Landscaped greens
- Jogging & Walking tracks
- Manicured gardens
- Manned barriers at entry & exit
- Intercom facility



Experience an array of leisurely activities surrounding your home.

- Swimming pool
- Club House
- Adjoining extensive green area
- Schools







Recharge yourself for a blissful stay

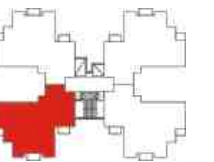


Get ready to experience living where joy and peace unite

- Open lawn tennis court
- Open badminton court
- Sand pits
- Tot-lots with kids play equipment

## Type - Y1

3BR3TSQ: 1560 sq. ft.



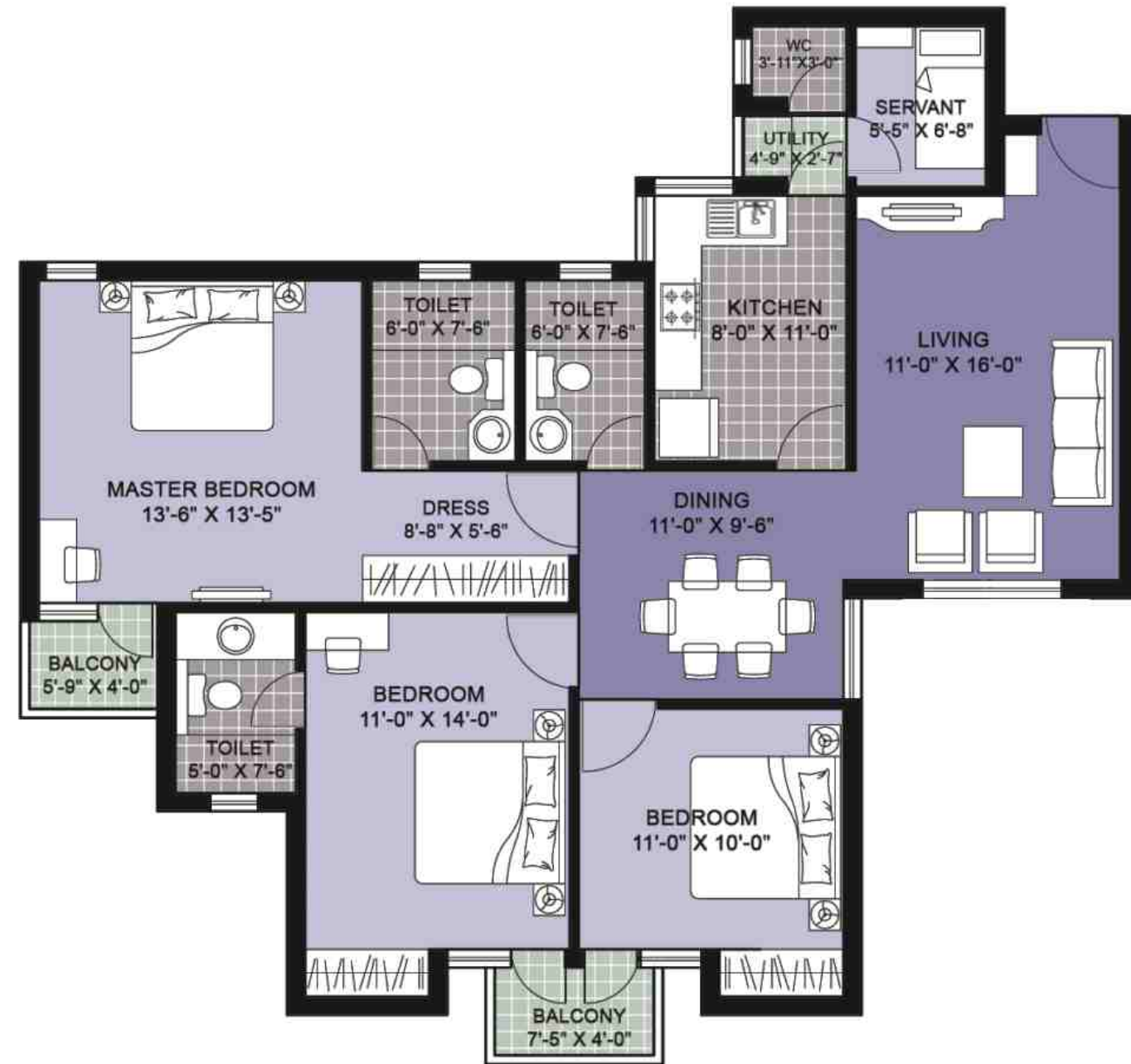
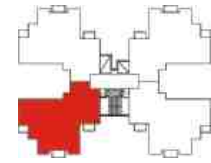
Note: \* indicates mirror image

A1 - A11 : G01\* - 1401\*, G02\* - 1402\*  
 A1, A3, A5, A7, A9 : G03\* - 1403\*, 204 - 1404  
 A2, A4, A6, A8, A10, A11 : G04 - 1404, 203\* - 1403\*



## Type - Y2

Saleable Area : 1530 sq. ft.

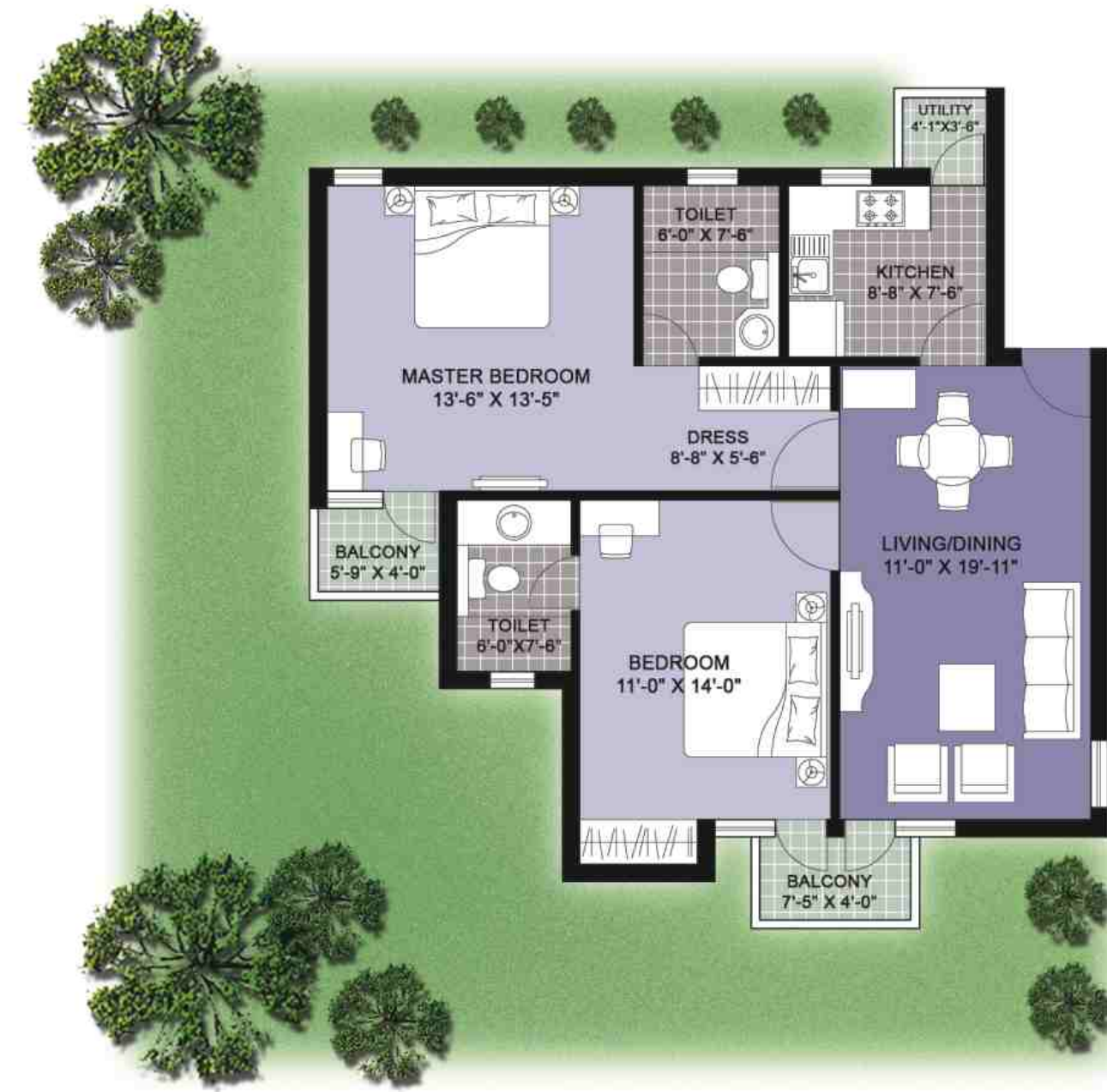
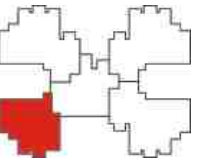


A1, A3, A5, A7, A9 : 104  
A2, A4, A6, A8, A10, A11 : 103\*

Note: \* indicates mirror image

## Type - Z1

2BR2T: 1115 sq. ft.



A1, A3, A5, A7, A9 : G04  
A2, A4, A6, A8, A10, A11 : G03\*

Note: \* indicates mirror image



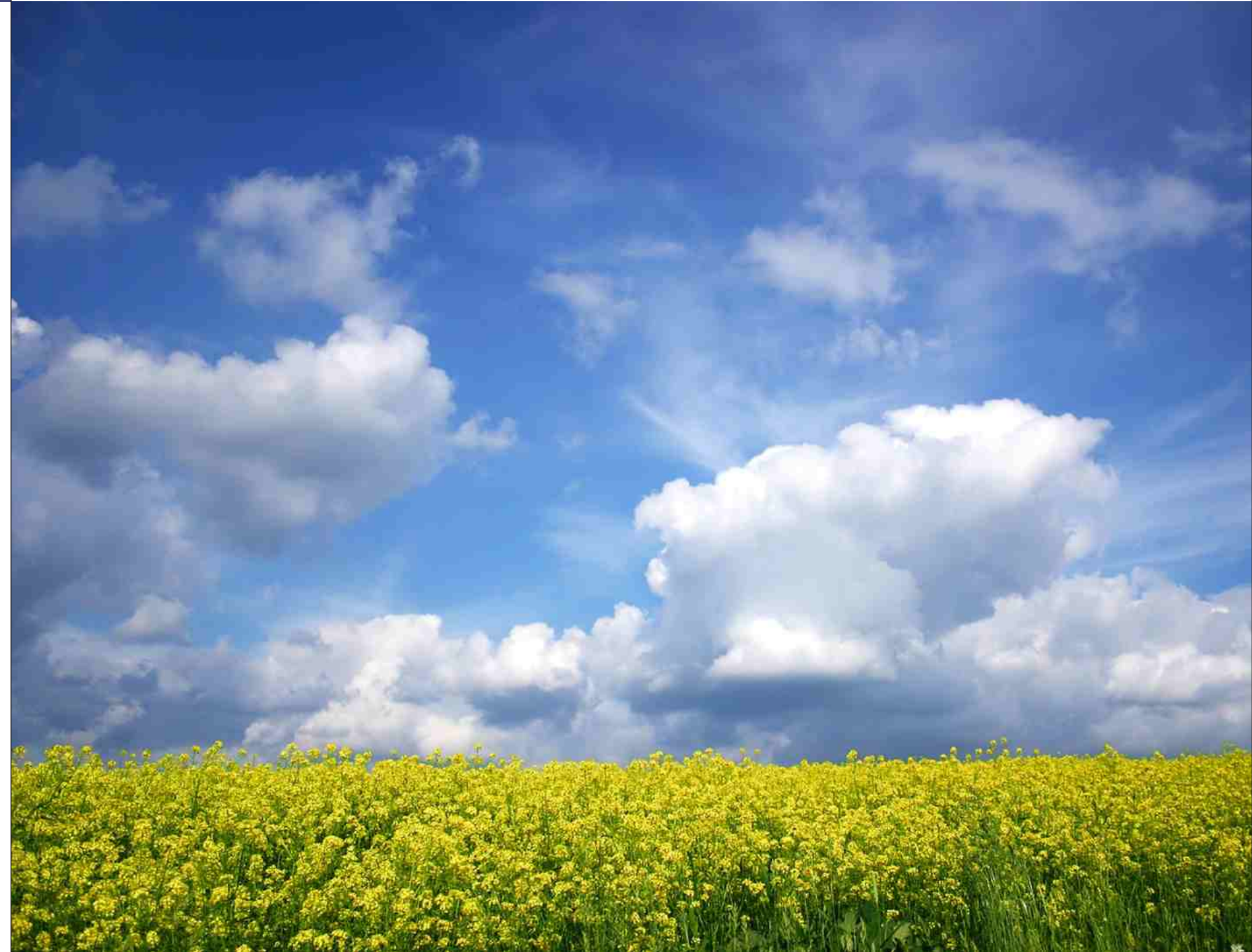
# Finishes



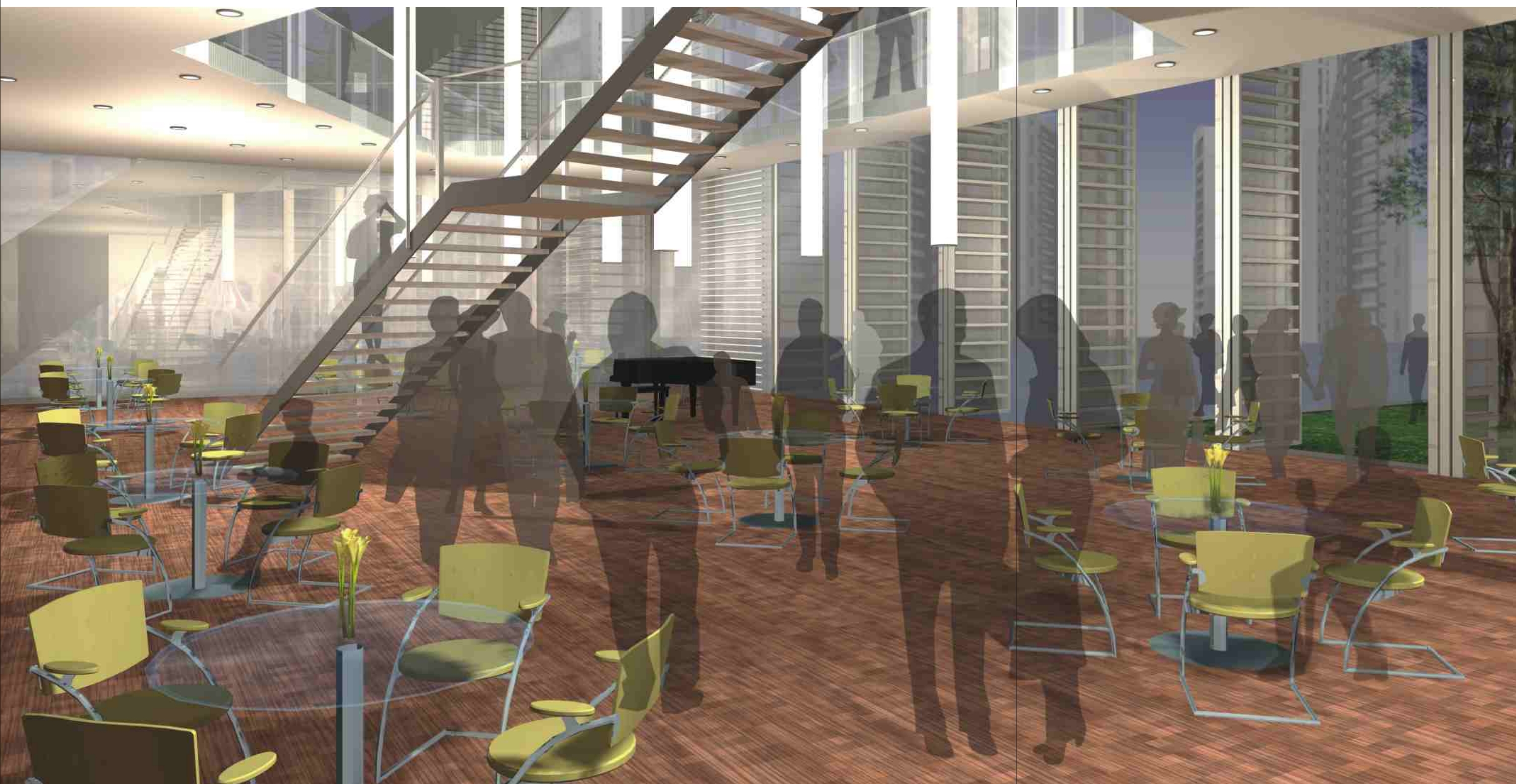


# Specifications

Structure		Earthquake resistant RCC framed structure
Flooring	Living /Dining Bedrooms Balconies Common areas & staircase Lift lobby Domestic Help Room	Vitrified tiles Laminated wooden flooring Ceramic tiles Stone / marble Stone / vitrified tiles Ceramic tiles
Walls / Ceiling	External Internal Lift lobby	Exterior paint Plastic emulsion paint, ceiling in OBD; domestic help room/toilet in OBD Combination of stone & paint
Lift		One passenger and one service lift to each tower
	Kitchen	Flooring Wall finishes Kitchen Counter
		Ceramic tiles Ceramic tiles upto 600mm height above the counter area Granite counter with stainless steel sink with drain board
Doors	Internal External Main Door	Seasoned hardwood frames with moulded European style shutters Anodized / powder coated Aluminium or UPVC glazed doors Seasoned hardwood frames with moulded European style shutters
	Toilet	Wall Flooring Fittings
		Ceramic tiles upto 2100mm height Ceramic tiles EWC & wash basin in white colour, single lever CP fittings, granite counter, pipelines for geyser
Windows		Anodized / powder coated Aluminium or UPVC glazed
Electrical		Three phase supply with independent meter, copper wiring in concealed conduits; modular switches
Communication		One telephone jack each in living room and master bedroom Intercom facility to each flat in living room
Television		TV Point in living room and master bedroom
Power back-up		24x7 power back-up







# Club House

- Gymnasium
- Multipurpose hall for meditation, yoga & gatherings
- Swimming pool
- Kids play area
- Changing rooms
- Pantry
- 24 x 7 power back-up





**Marketing Office - Gurgaon:**

Unitech Signature Towers, Level - 1,  
South City - 1, N.H. - 8,  
Gurgaon - 122001  
Tel: +91 124 4552000

**Sales Office - Noida:**

Unitech Limited, Grande Pavillion, Sector - 96,  
Express Way (Near Amity Management School),  
Noida - 201305  
Tel: +91 120 3211534, 4016800

E-mail: [sales@unitechgroup.com](mailto:sales@unitechgroup.com)

Website: [www.unitechgroup.com](http://www.unitechgroup.com)

The layout, building plans, and specifications of buildings, complex and the apartments are tentative and subject to variation / deletion as deemed appropriate by the Company or as directed by any competent authority. Furniture is not being provided. Furniture layout shown in the Brochure is only indicative of how the Unit can be used. Dimensions given in the unit plans are masonry dimensions (excluding the plaster thickness). All dimensions are rounded off and marginal variations may occur in the process of construction as per Architect's advice.