

RAHEJA™
DEVELOPERS
 BUILDING . ADVANCED . LIFESTYLES

Corp. Off.: 215-216, Rectangle 'One', D-4, District Centre, Saket, New Delhi-110017
 Ph.: 011-40611111 • Email:marketing@rahejabuilders.com • www.raheja.com

Join us on :

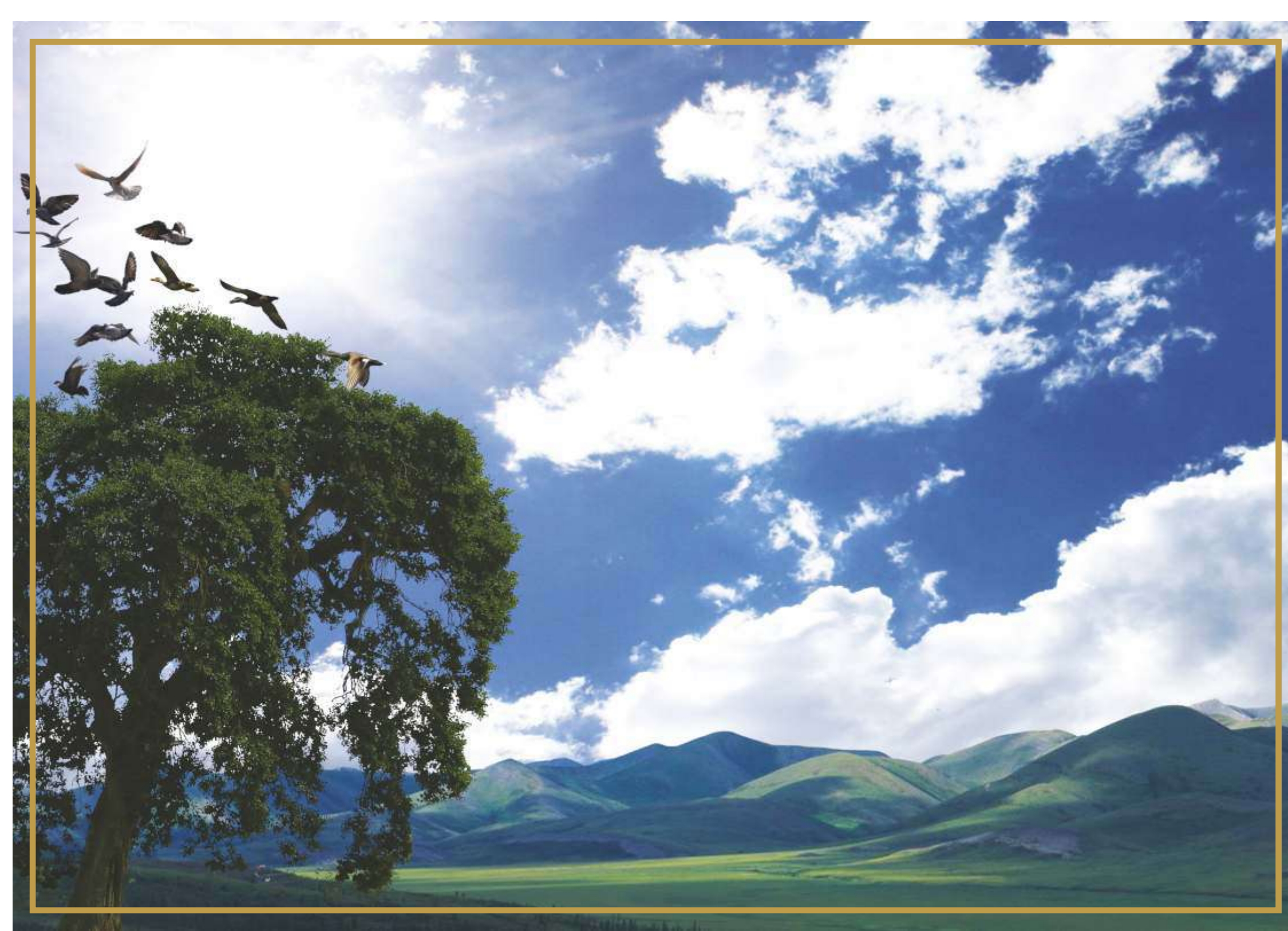


Disclaimer : This brochure is not a legal document. It only describes the conceptual plan to convey the intent and purpose of the developers. The details mentioned in this brochure are tentative and are subject to change at the sole discretion of the developers and/or competent authorities. A number of images in this brochure are artistic impressions only.

• No. & Date of License : 25 of 2012 dt 29.03.2012 • Type of colony & its areas : Residential Plotted & Group Housing Colony, 107.85 Acres • Name of the colonizer : M/s Raheja Developers Ltd. • All the approvals can be checked in the office of Raheja Developers Ltd.*
 *As on date




RAHEJA
ARANYA
 THE GREEN CITY



Aranya in Sanskrit means “forest” or “wilderness” and represents our vision to provide you with your own piece of Heaven on Earth. In our fast paced lives, we sometimes forget our place in Gods creation.

When was the last time you looked up at the night sky, gazed at the plethora of Stars and Galaxies, and wondered, are we the only ones out here ?

When was the last time you woke up to the calls of peacocks and other exotic birds ?

When was the last time you inhaled the freshness of morning dew dripping from wild fragrant flowers ?

When was the last time you went for a nature walk surrounded by natural sulphur springs and heritage architecture?

When was the last time you felt alive?

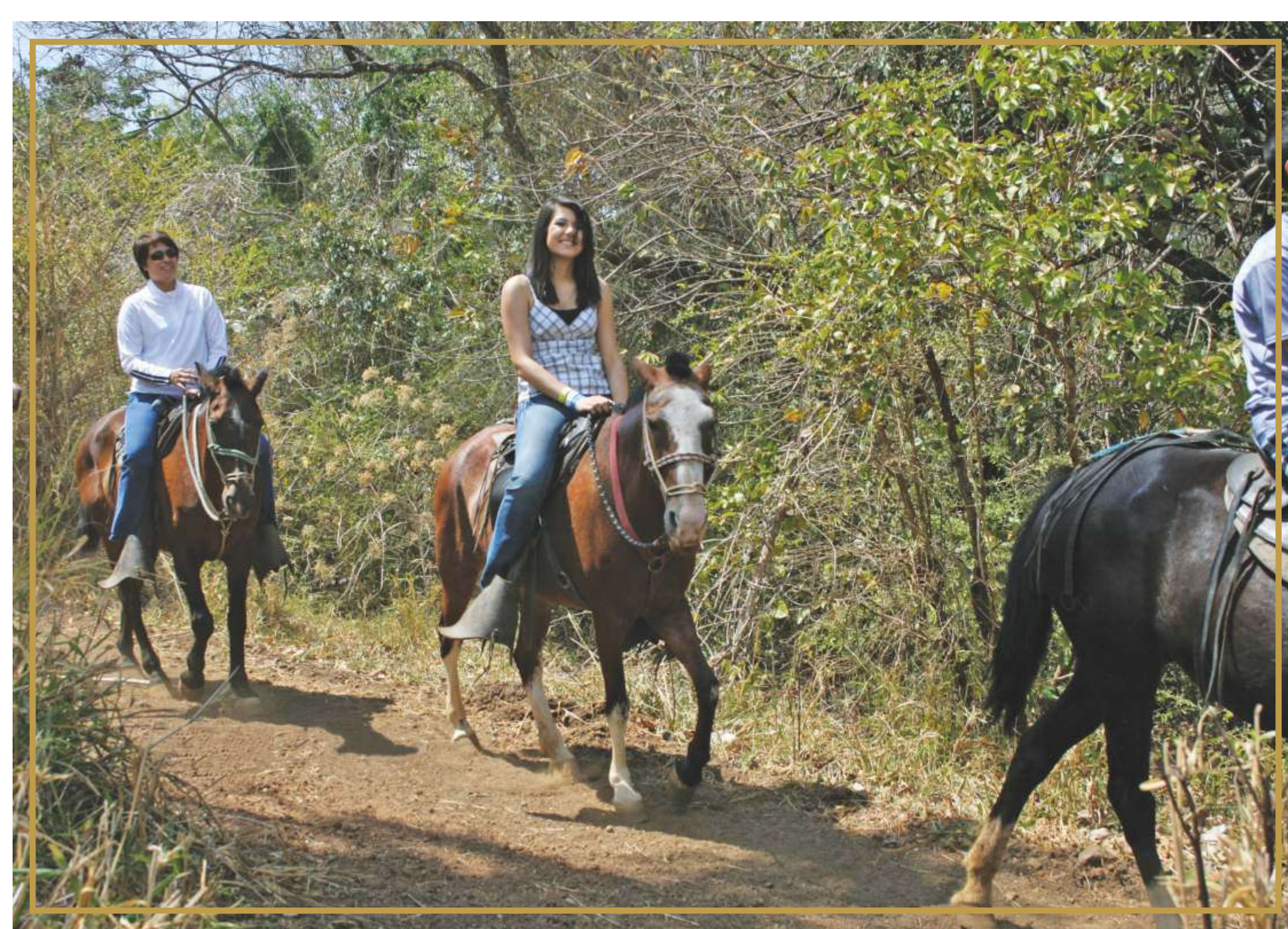


WELCOME TO RAHEJA'S ARANYA

Raheja's Aranya -The Green City, Sohna is one of the most prestigious and ambitious projects of the company. This mega city will be a completely integrated township with all the facilities one needs and aspires to enjoy a comfortable life-style. Spread over 107.85 acres of land with additional expansion of township over 200 acres abutting several thousand acres of forests and the Aravalli ranges, the township will be well equipped to fulfill every need of its discerning buyers. Group housing condominiums, penthouses, designer homes, villas and plots will form core of the development in a harmonious blend with social infrastructure comprising schools, hospitals, nursing homes, shopping arcades and adequate open greens. Landscaped areas, water bodies, swimming pools and health-care facilities will adorn the city. Raheja's Aranya -The Green City, Sohna is just 12 kms* from Gurgaon residential sectors and 4 kms* from KMP Corridor.

At Aranya you remain close to Delhi and Gurgaon, while being away from their pollution and congestion.

*Approx. Distance

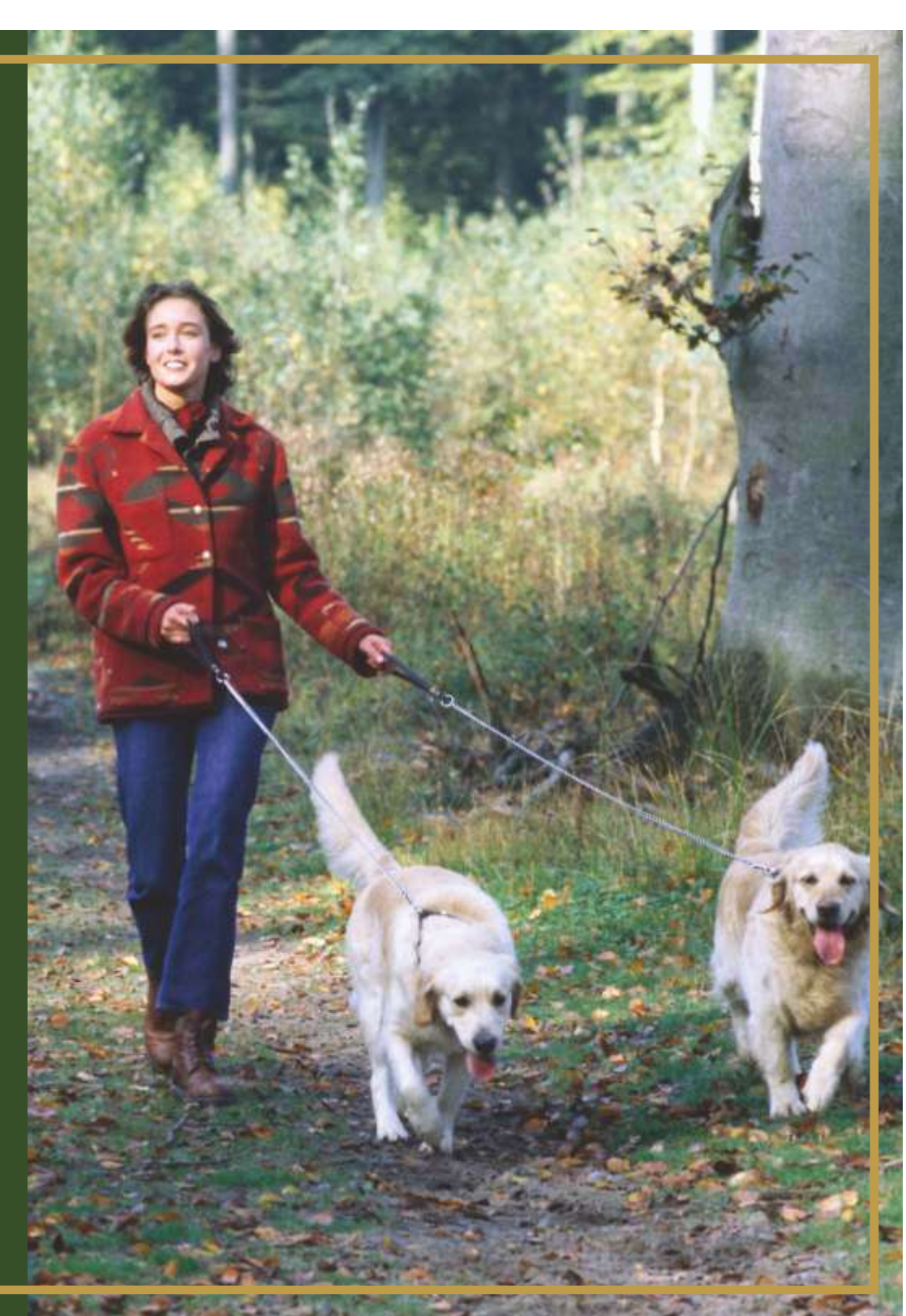


CLOSE TO NATURE

Be one with nature at Raheja's Aranya -The Green City. Every facet of the township is sheer symphony with nature's bounty, be it the never ending Aravalli facing views or the amazing landscape of greenery and vast open spaces. Enjoy the picture postcard Aravalli views, breathing in the rejuvenating pure fresh air with Nature as your next-door-neighbour.



Aravalli ranges near Raheja's Aranya City





Actual photograph of the existing greenery at the Raheja Aranya City site.

THE ENVIRONS

Being located on the smooth Gurgaon - Sohna Road is a major plus in terms of connectivity and accessibility for Raheja's Aranya -The Green City, Sohna.

The entire site is Aravali facing, abounding in plenty of green areas at the existing location.

The major growth corridor of the area - the upcoming KMP Expressway, is located very close to the site. The Expressway is at an advanced stage of construction and shall soon be operational.

Haryana Government's much anticipated mega project - the upcoming state of the art industrial estate of IMT Sohna is being developed very close to the site.



Actual photograph of the KMP expressway, nearing completion, close to the Raheja's Aranya City Site.



Actual photograph of the Gurgaon - Sohna Road.



Actual photograph of the existing industrial estate, flanked by the upcoming IMT Sohna.



PLOTTED DEVELOPMENT

It is the dream of many to own their own piece of earth. However, not many have the good fortune to realise it within their lifetime. Raheja Aranya -The Green City provides you the opportunity of a lifetime of owning plot sizes from 193 sq yards to 822 sq yards close to Gurgaon. Come, and make your dreams come true !!

LIFESTYLE HOMES..

The exquisitely crafted designer homes & villas at Raheja Aranya -The Green City are a connoiseur's delight. Fully loaded with imported floorings & kitchen, private lap pool, natural wooden floorings, air-conditioning, imported sanitaryware, & glass railings, these uber residences are meant only for the chosen few.





GIVE YOUR PARENTS THE GIFT THEY DESERVE

Our parents have always been our inspiration, our idols, our mentors. Remember the first step you took, the first word you spoke, the first time you went to school, the first time you learnt to ride a cycle. Our parents have always been our guiding lights. In the twilight years of their lives, Raheja's Aranya -The Green City is your way of reciprocating all the love & affection they bestowed on you, by gifting them an oasis of peace & serenity, in an exclusive gated environment where your family spends the weekend together. The township is a self sustainable and secure community surrounded by all the necessary conveniences like a medical center, health programs, shopping etc.

A way to tell them, that YOU CARE.





A PREMIUM GROUP HOUSING IN RAHEJA'S ARANYA - THE GREEN CITY

And for those looking at apartment living, with lesser hassles of self building and maintenance, there will be options to keep an apartment under a condominium arrangement.



RETAIL PARADISE

The retail centre at Aranya -The Green City shall be a one stop destination for your weekend shopping and entertainment needs with a collection of all lifestyle brands and entertainment options under a single roof, being completely mindful of the fact that you would not like to travel far away from your residence for your shopping needs.

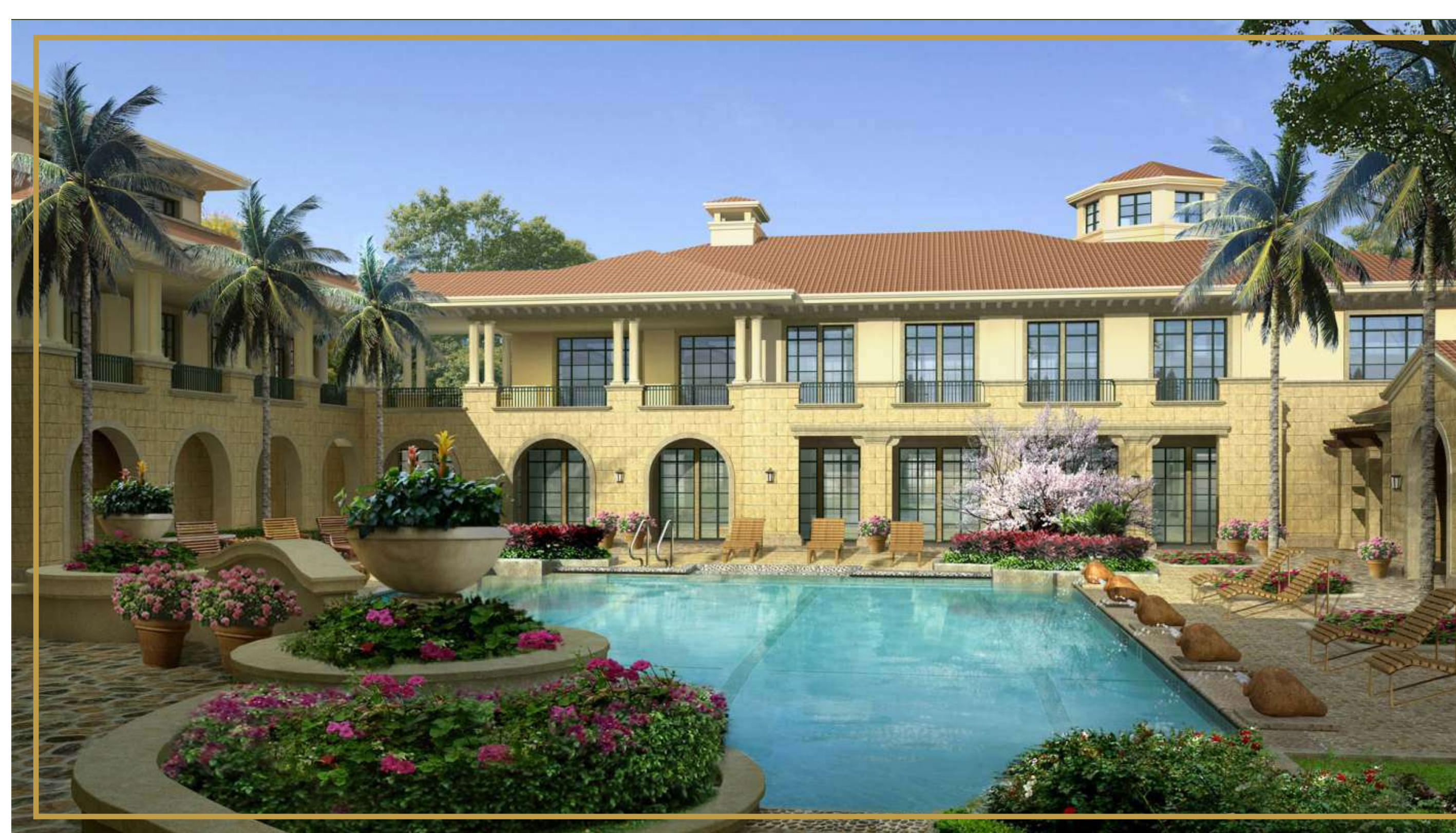




SOCIAL INFRASTRUCTURE

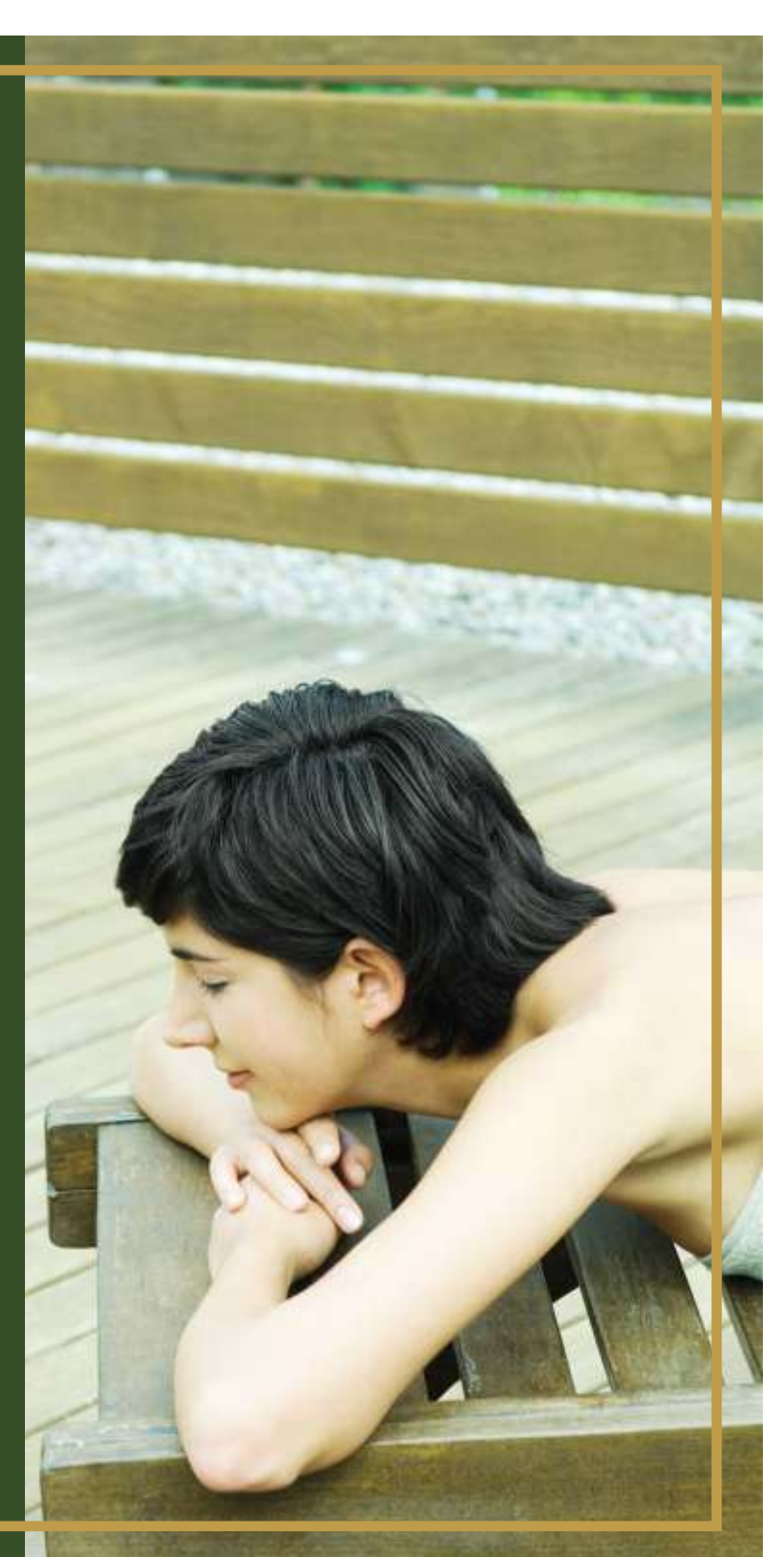
Health and education are core social infrastructure requirements & we are extremely aware of this fact. That's the reason why only the best names in health and education shall be announcing their arrival at Raheja Aranya - The Green City. A world class school, hospital and nursing homes shall make you feel completely at ease at the township.





RELAX AND DE-STRESS AFTER A HARD DAY

The club - house at Raheja's Aranya - The Green City comes studded with all the delights you desire, from the exotic spa, the soothing steam sauna, state of the art tennis and basketball courts, gymnasium, refreshing jacuzzi, as well as aerobics centre aimed at ensuring a healthy body and mind for you and your near and dear ones. Add to that, the sulphur waters of Sohna Springs to treat and detox your body.





STATE OF THE ART SERVICES

At Raheja's Aranya -The Green City, we understand that you need to be close to conveniences and a truly urbane lifestyle. That's the reason why we have brought it all in the midst of nature's bounty. To ensure that you are a cut above the rest, we are pleased to offer the following

Gated community with 24 x 7 security and systems.

State of the art club-house with gymnasium, spa, steam sauna, jacuzzi, swimming pool, tennis courts.

Schools

Hospitals & Nursing homes

Shopping arcades & local SCO markets.



SITE PLAN



SOCIAL WELFARE

We realise that our buildings are built with the sweat and toil of labor who work day and night to ensure the timely delivery of the projects. As a mark of appreciation for their contribution, we are providing the children of the labor with Day Care Centres at all our sites where they are provided with nutritious food, basic education and medical facilities free of cost.



TRANSPARENCY

At Raheja, we pride ourselves in always implementing new and innovative processes to keep you updated about your property. Join us on Facebook, Youtube or our continuously updated Website to watch the latest construction update videos, virtual tours, new product offerings and newsfeeds from anywhere in the world or while on the move.

We also take pride in being one of the few real estate companies to run on specially developed ERP softwares which provides accountability and transparency in processes. What it means for you is that you can be always aware of the present construction status of your property, your account statements and the latest updates at the touch of a button while you relax at home.





India's Premium Brand
We are Iconic Because
We Choose to be Different

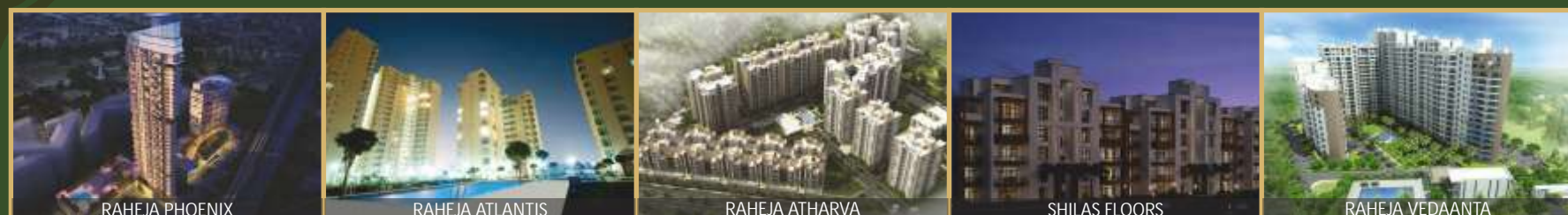
RAHEJA DEVELOPERS is today large enough to be counted amongst the foremost real estate companies in India, but in essence, it is small enough to address each customers' personalized needs and expectations. Built on a legacy of over 22 years of honored commitments, integrity, innovation and timely delivery of Quality Projects, RAHEJA is a name that today exudes TRUST. We don't just build Homes / Offices / Malls / SEZs with brick and mortar, but also with feelings and emotions, because we know that the space we create is not merely a House for you, but a HOME purchased with your hard earned money!!

That is the reason why all our projects are always constructed on time with specifications and construction quality as per commitment. The projects under the new Gurgaon Masterplan are no different and have successfully carried forward this legacy of trust & transparency. RAHEJA invites you to be a part of their huge FAMILY of Happy Clientele!!

RAHEJA DEVELOPERS has been recognized on several International and National platforms and conferred with prestigious awards such as CNBC AWAAZ-CRISIL Real Estate Awards, Cityscape Asia Awards, Asia Pacific Bloomberg Google Property Awards, OPP (London) Excellence Awards, Zee Business RICS Award and the Golden Peacock Award for Innovation Management. Raheja was also awarded the internationally acclaimed Euromoney award for the Best Developer in India & the OPP Award for the Best Developer Worldwide.



OUR PROJECTS



LOCATION MAP



- Located on the Gurgaon Alwar Road easily approachable from the KMP Expressway (approx. 4 kms away)
- Just a comfortable 20 minutes drive approx. from Gurgaon on the smooth Gurgaon – Sohna Road.
- IMT-Sohna and upcoming sports city in the vicinity of the township
- Accessibility and connectivity are huge pluses for the project whose residents will be able to commute comfortably and conveniently to nearby Gurgaon.

*Map not to scale