

# GODREJ SUMMIT

SECTOR 104, GURGAON

JOINT VENTURE PARTNERS

ZARA | SANYA

 | **PROPERTIES**

# PRESENTING **READY-TO-HOST** PREMIUM RESIDENCES



Actual photograph

# MASTER LAYOUT PLAN



## LEGEND

- |                     |                        |                       |                              |                          |                           |
|---------------------|------------------------|-----------------------|------------------------------|--------------------------|---------------------------|
| 1. COMMUNITY CENTRE | 4. TENNIS COURT        | 7. PRIMARY SCHOOL     | 10. CONVENIENCE SHOPPING     | 13. COURTYARD            | 16. AMPHITHEATER          |
| 2. SWIMMING POOL    | 5. BADMINTON COURT     | 8. NURSERY SCHOOL - 1 | 11. YOGA AND MEDITATION AREA | 14. SENIOR CITIZEN ARENA | 17. HALF BASKETBALL COURT |
| 3. KIDS POOL        | 6. MULTI PURPOSE COURT | 9. NURSERY SCHOOL - 2 | 12. KIDS PLAY AREA           | 15. SKATING RINK         | 18. EWS                   |

### TOWER A, B & C

1. 4 BHK + UTILITY
2. 4 BHK + UTILITY + STUDY
3. 4 BHK + UTILITY + STUDY
4. 4 BHK + UTILITY

### TOWER D

1. 2 BHK + STUDY
2. 2 BHK + STUDY
3. 3 BHK (TYPE I)
4. 3 BHK (TYPE I)
5. 2 BHK + STUDY
6. 2 BHK + STUDY
7. 3 BHK (TYPE I)
8. 3 BHK (TYPE I)

### TOWER E

1. 2 BHK
2. 2 BHK
3. 2 BHK + STUDY
4. 2 BHK + STUDY
5. 2 BHK - 1269 square feet
6. 2 BHK - 1269 square feet
7. 2 BHK - 1269 square feet
8. 2 BHK - 1269 square feet

### TOWER F

1. 2 BHK + STUDY
2. 2 BHK + STUDY
3. 3 BHK (TYPE I)
4. 3 BHK (TYPE I)
5. 2 BHK + STUDY
6. 2 BHK + STUDY

### TOWER G

1. 2 BHK
2. 2 BHK
3. 2 BHK
4. 2 BHK
5. 2 BHK + STUDY
6. 2 BHK + STUDY
7. 2 BHK
8. 2 BHK

### TOWER H

1. 3 BHK (TYPE I)
2. 3 BHK (TYPE I)
3. 3 BHK + UTILITY (TYPE I)
4. 3 BHK + UTILITY (TYPE I)
5. 2 BHK + STUDY
6. 2 BHK + STUDY

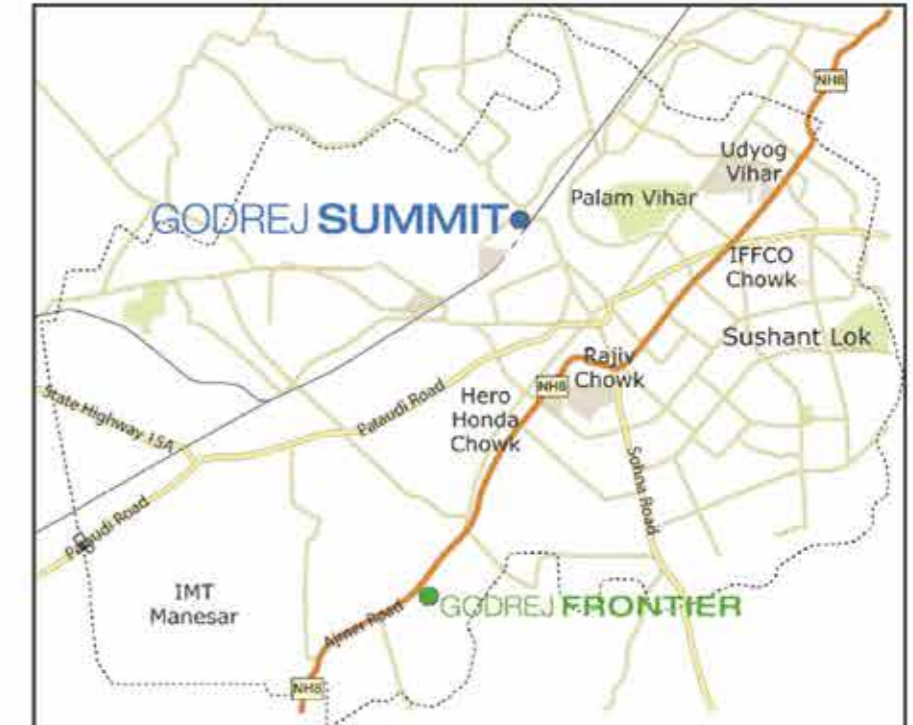
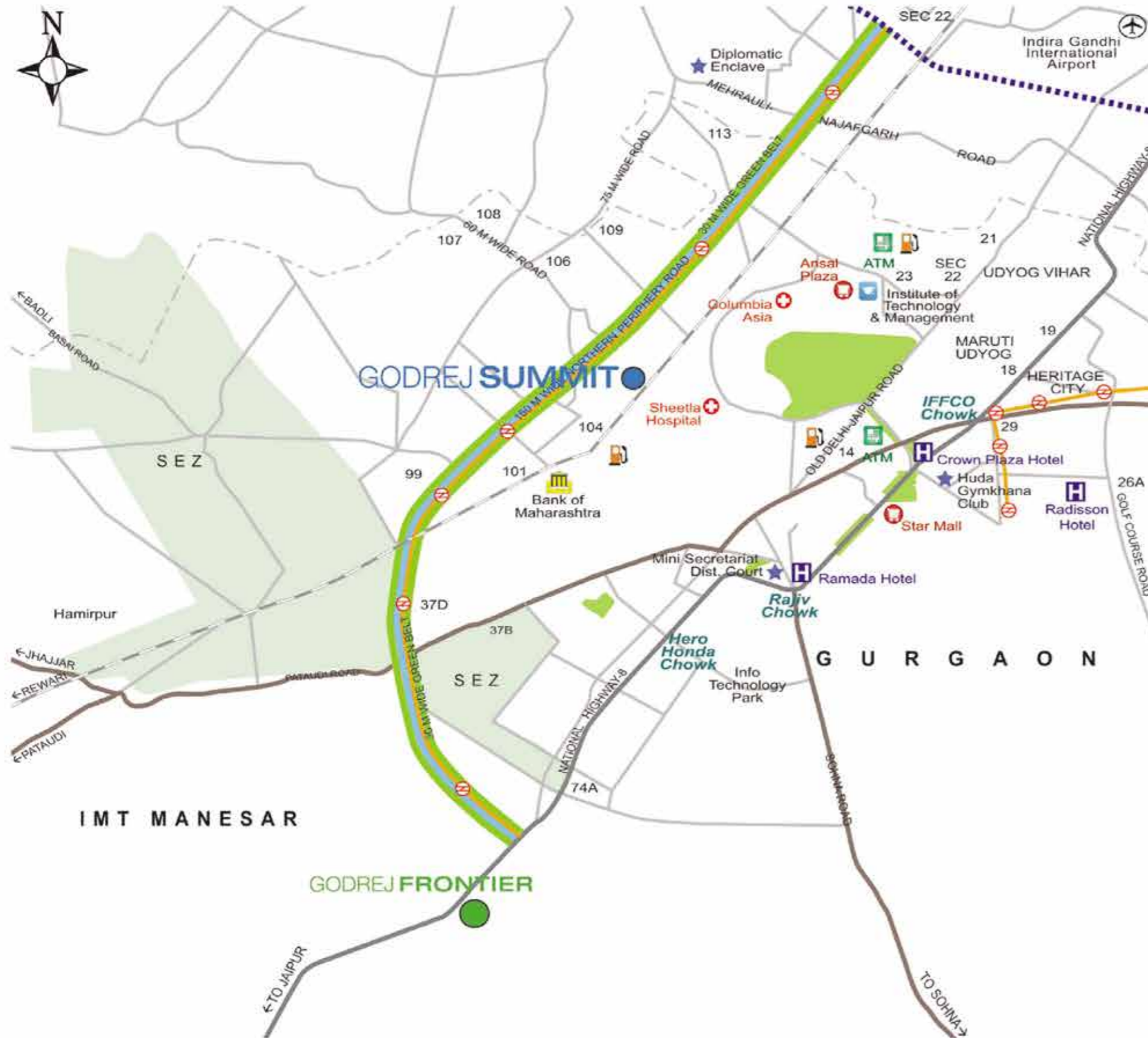
### TOWER J

1. 3 BHK (TYPE I)
2. 3 BHK (TYPE I)
3. 3 BHK (TYPE II)
4. 3 BHK + UTILITY (TYPE I)
5. 3 BHK + UTILITY (TYPE I)
6. 3 BHK + UTILITY (TYPE II)

### TOWER K & L

1. 3 BHK + UTILITY (TYPE I)
2. 3 BHK + UTILITY (TYPE I)
3. 3 BHK + UTILITY (TYPE II)
4. 3 BHK + UTILITY (TYPE I)
5. 3 BHK + UTILITY (TYPE I)
6. 3 BHK + UTILITY (TYPE II)

# LOCATION MAP



PRESENTING  
READY-TO-HOST  
**CLUBHOUSE - THE PEAK**

# REJUVENATE AT THE STATE-OF-THE-ART CLUBHOUSE



Actual photograph

ENJOY YOUR MOVIE WEEKENDS IN THE **PRIVATE MINIPLEX**



Actual photograph

PRIVATE MINIPLEX EQUIPPED WITH **PROCELLA AUDIO**



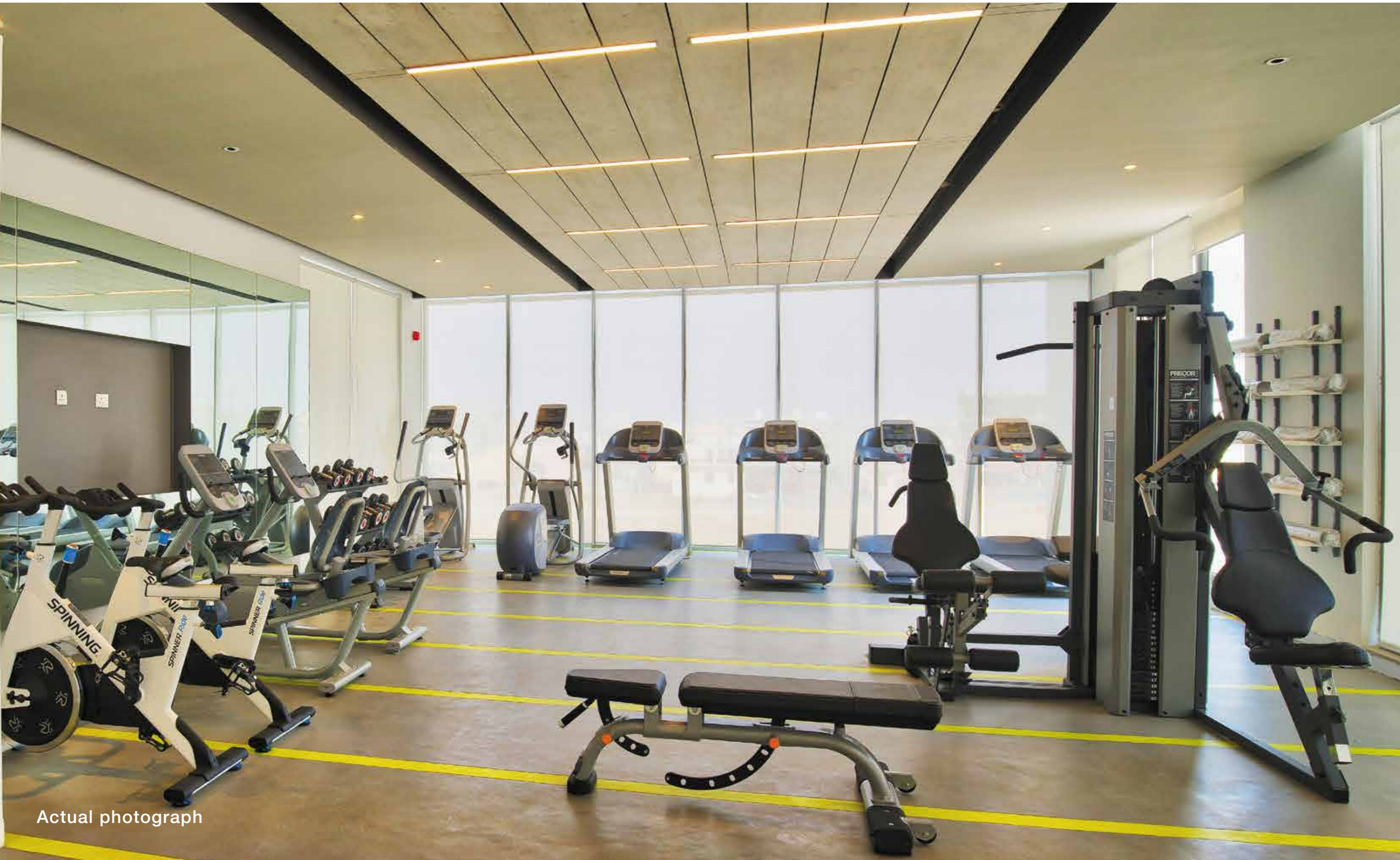
# The World's Finest Home Cinema Loudspeakers

*"Procella speakers are the best cinema speakers we have heard"*

-BILD & LJUD HEMMA/LYD & BILDE magazine



# GET FITTER AT A BRANDED GYM BY **PRECOR EQUIPMENTS**



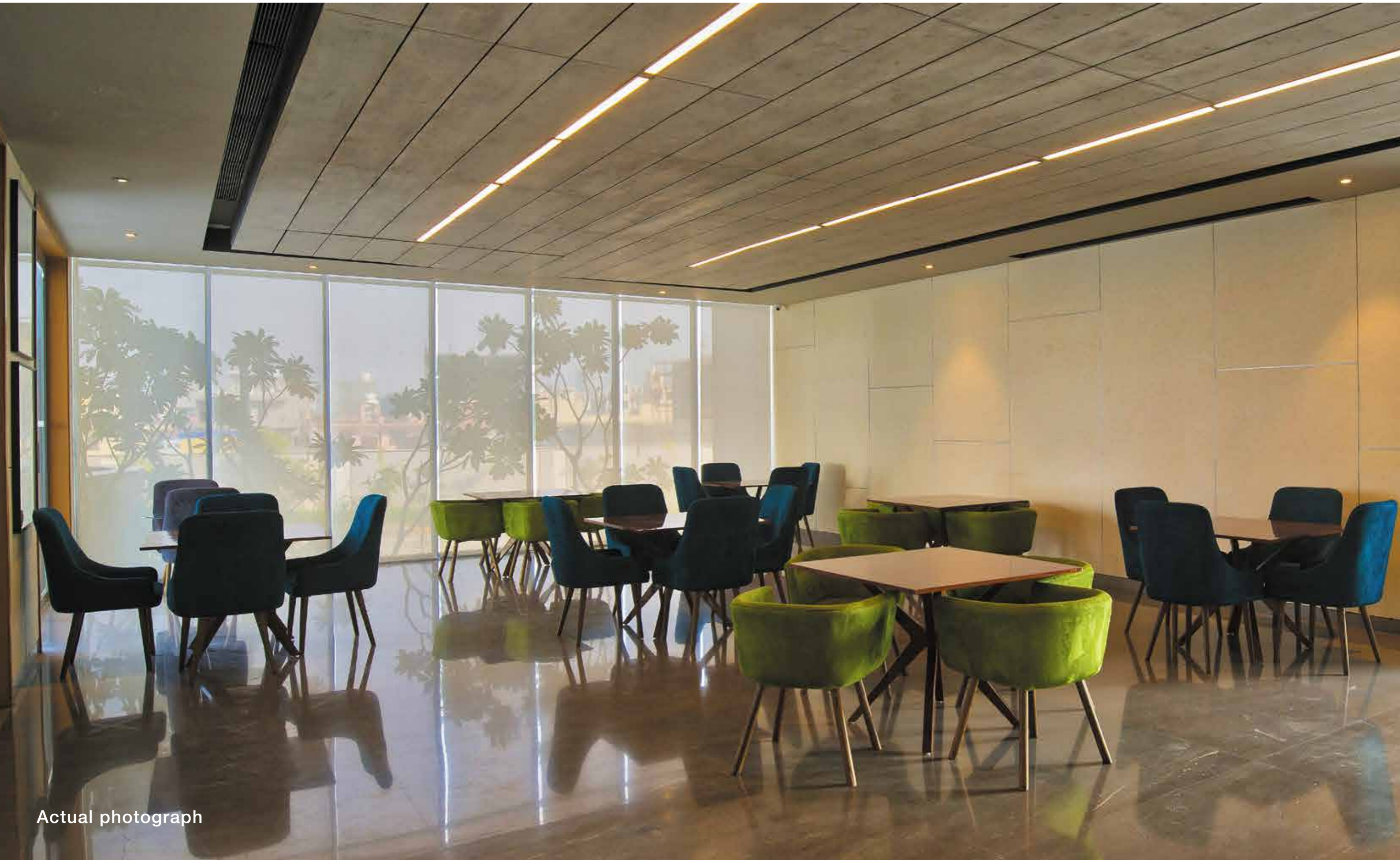
Actual photograph

# GET SERVED IN STYLE AT THE **POOLSIDE CAFÉ**



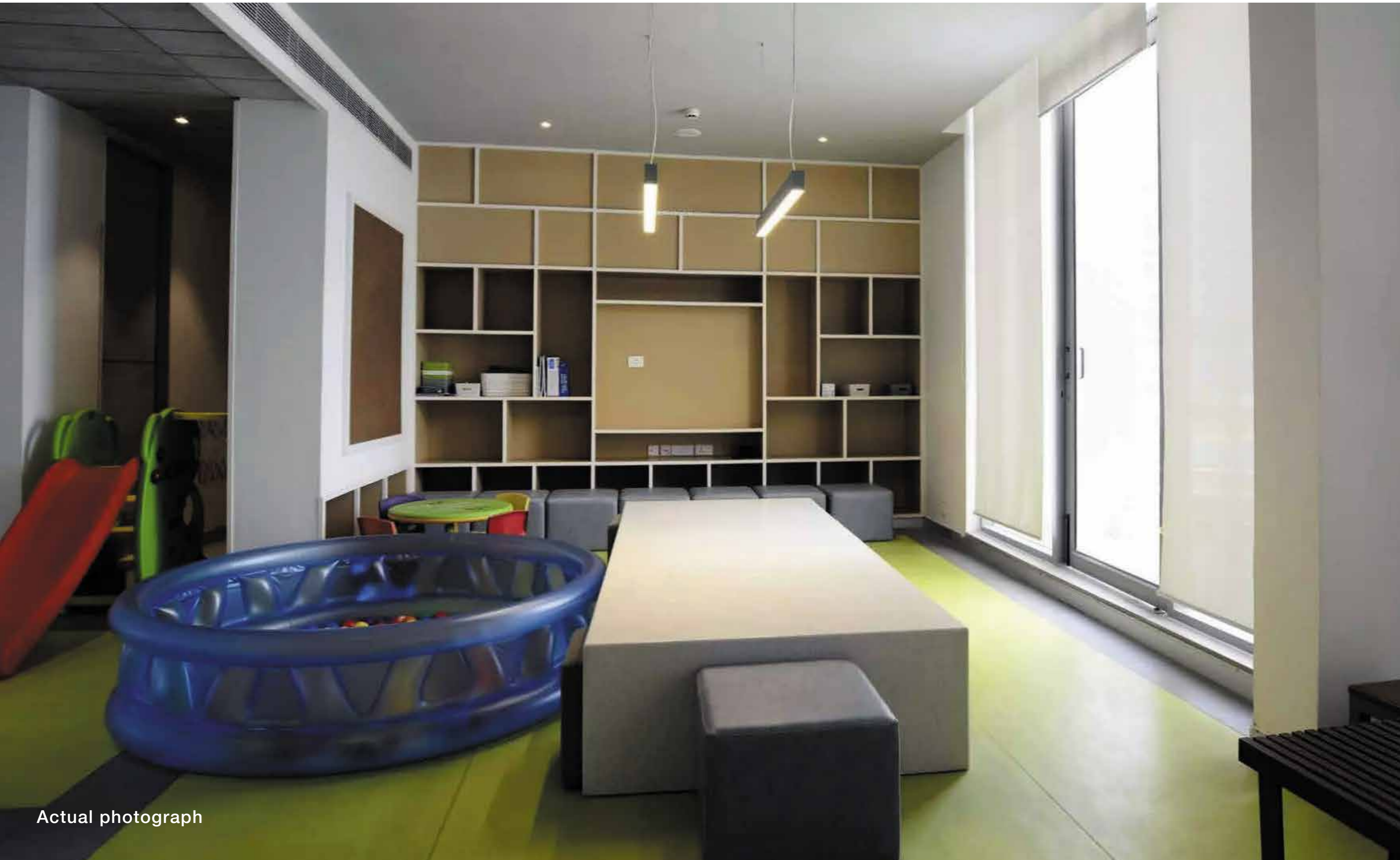
Actual photograph

# CELEBRATE THE PRECIOUS OCCASIONS - **MULTIPURPOSE HALL**



Actual photograph

# LET YOUR CHILDREN UNWIND AT THE **KIDS' PLAY AREA**



Actual photograph

# DISCOVER THE GAMES YOU LOVE - **INDOOR GAMES ZONE**



Actual photograph



Actual photograph

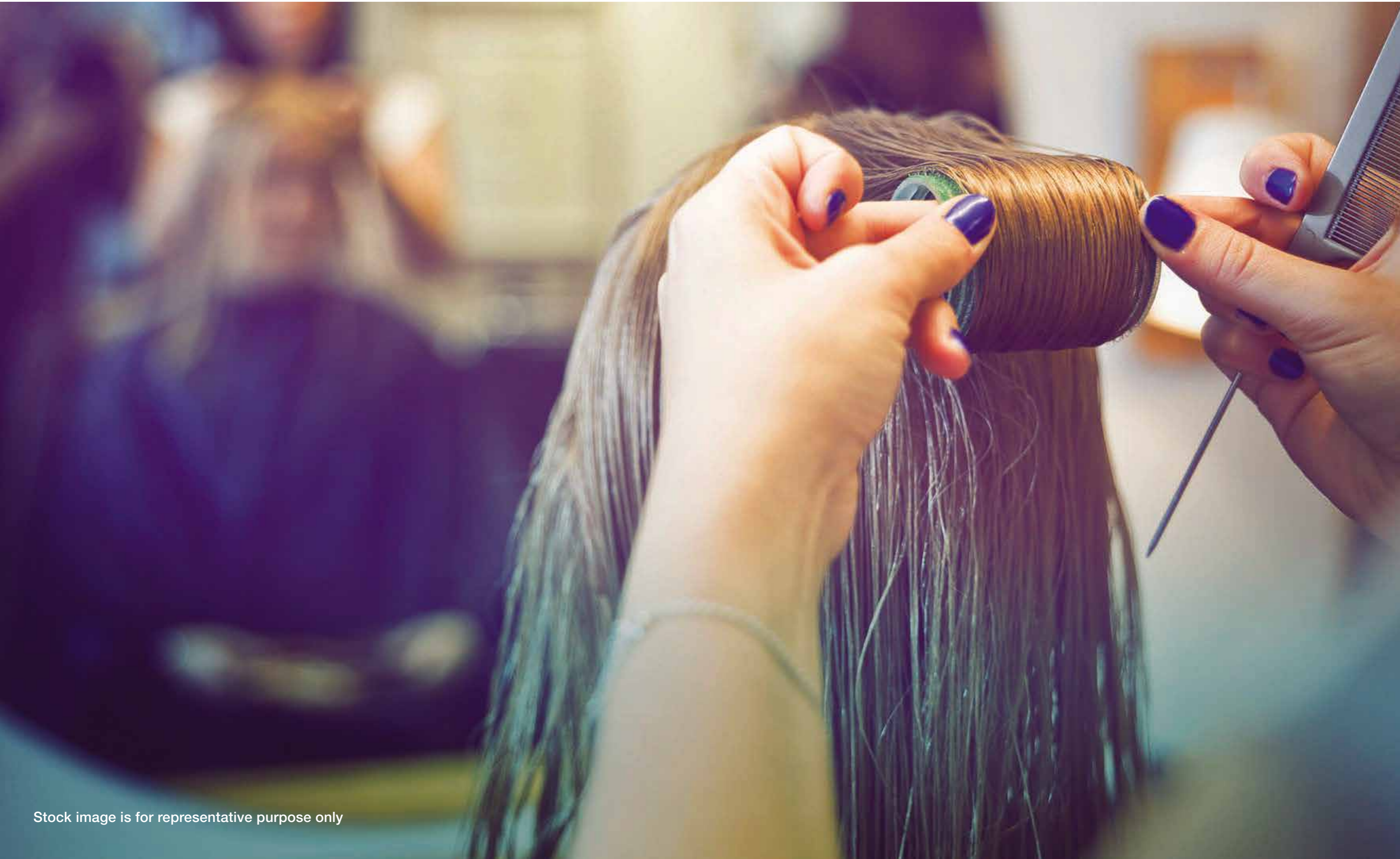


Stock image is for representative purpose only



Stock image is for representative purpose only

# STAY PAMPERED AT A **BRANDED SALON**



PRESENTING  
READY-TO-HOST  
**COMFORT & CONVENIENCES**

# RELISH **COMFORT & CONVENIENCES** AT YOUR DOORSTEP



BREAKFAST NEEDS - HARVEST GOLD



GOLF CART



HEALTH CAMP - SRL DIAGNOSTICS



ATM - HDFC BANK



TRAFFIC MARSHAL



PROJECT MANAGED BY GLOBAL LEADING  
FACILITIES MANAGEMENT COMPANY

**CBRE**

# FULFILL YOUR GROCERY NEEDS WITH **DAILY NEEDS STORE**



PRESENTING  
READY-TO-HOST  
**ACTIVE LIFESTYLE**

# STAY ENERGIZED WITH A HOST OF **ACTIVITIES**



PRESENTING  
READY-TO-HOST  
**SECURED LIVING**

# YOUR SAFETY IS OUR PRIORITY



CCTV CAMERAS



CANINE PATROLING SQUAD



ENHANCED PERIMETER SECURITY



BIKE PATROLING SQUAD

Stock images are for representative purpose only

PRESENTING  
EXCLUSIVE  
**VALUE PROPOSITION**

# FULLY AIR-CONDITIONED APARTMENTS



Actual photograph

Available in selective / limited residences



# WARDROBE IN MASTER BEDROOM



Actual photograph

Available in selective / limited residences

# MODULAR KITCHEN WITH CHIMNEY AND HOB



Artist's impression

Available in selective / limited residences

JOINT VENTURE PARTNERS

**ZARA** | **SANYA**



---

RERA registration no. is 75 of 2017 dated 21.08.2017

This is an ongoing project and does not constitute an offer, an invitation to offer and/or commitment of any nature. This contains artistic impressions and no warranty is expressly or impliedly given that the completed development will comply in any degree with such artist's impression as depicted. Recipients are advised to use their discretion in relying on the information/amenities described/shown therein.

DGTCP (Director General Town and Country Planning) Haryana, Chandigarh has granted License bearing no. 102 of 2011 dated 07 December 2011 to Magic Info Solution Pvt. Ltd. and Others (JV with Godrej Properties Ltd. developing project through its subsidiary company Godrej Project Developers Pvt. Ltd. for development of Residential Group Housing Colony on the land measuring 22.123 acres. The total no. of residential apartments proposed to be developed under this project is 1177 and 208 EWS apartments. Building plan has approved by DGTCP vide its memo no. ZP-802/ JD (BS)/2012/17360 dated 05 September 2012. There is provision of one primary school and two nursery schools, community center & shopping area.