



**D L F**  
**RIDGEWOOD**  
 E S T A T E



*Apartment  
 Floor Layout*

*Building Plan  
 Layout*



*Individual  
 Apartment  
 Layout*

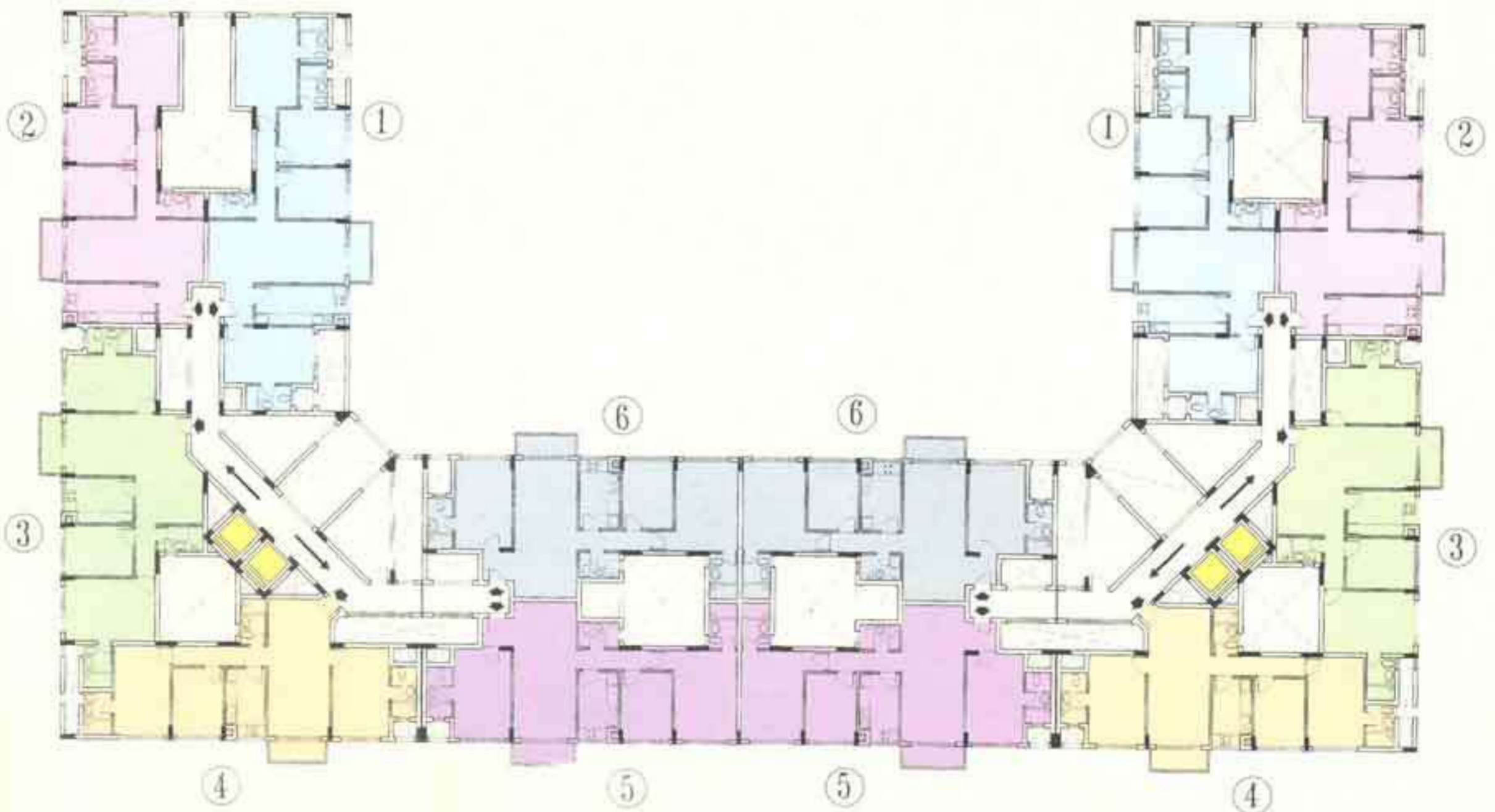


*Specifications*

Building Layout Plan



Typical Apartment Floor Plan





## Apartment Specifications

### F L O O R S

Living, Dining, Lobby & passage, Bed Rooms in White Mosaic/Terrazo.

### T O I L E T S

Floors in ceramic tiles, Walls suitable combination of ceramic tiles upto 7' height, mirror, balance oil bound distemper. Vitreous china sanitaryware - white. Conventional C.P. fittings of standard quality.

### K I T C H E N

Floors in durable floor tiles, Dado in ceramic tiles upto 2' above counter, Counter in granite, Stainless steel single bowl, single drain board sink.

### W A L L S

External walls in Cement plaster & painted (Sandtax Matt or equivalent). Internal walls in cement plaster with oil bound distemper.

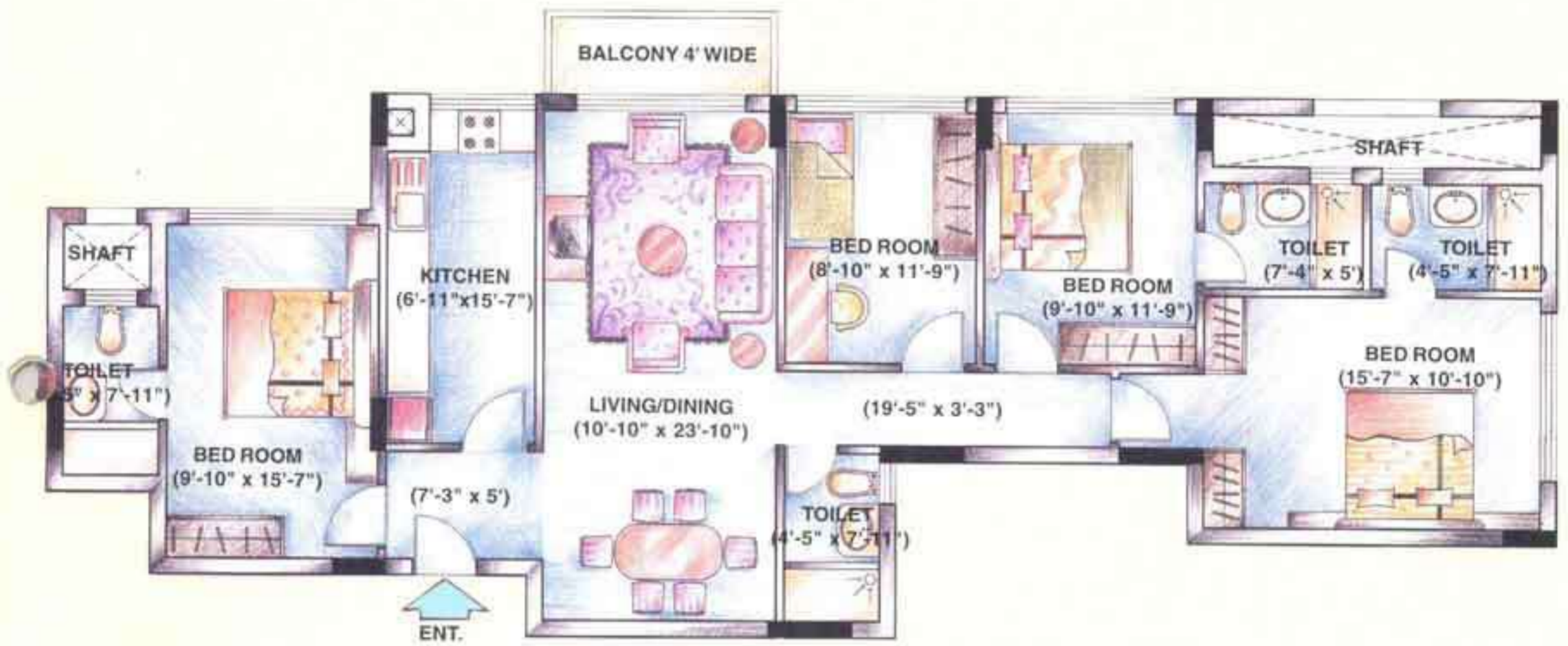
### D O O R S & W I N D O W S

Entrance door & Internal door frames in polished/painted Hard Wood/Pressed Metal. Entrance door - Both side teak veneered flush door. Internal doors - painted commercial flush doors. External doors/windows in aluminium.

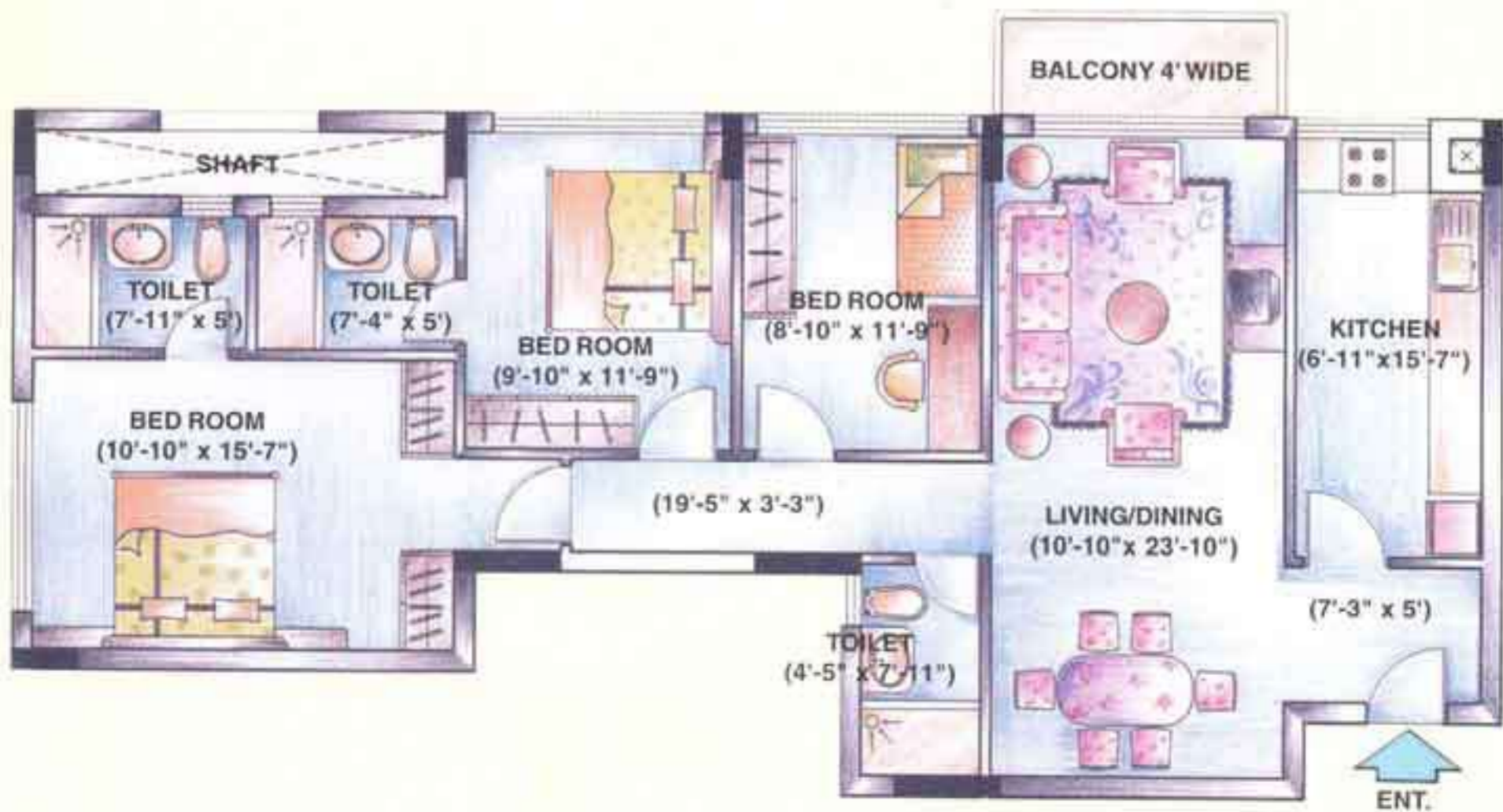
### E L E C T R I C A L

Plate type switch/sockets, copper wiring  
(fittings like fans, light fixtures, geysers etc. not provided)

*Apartment Layout Plan*

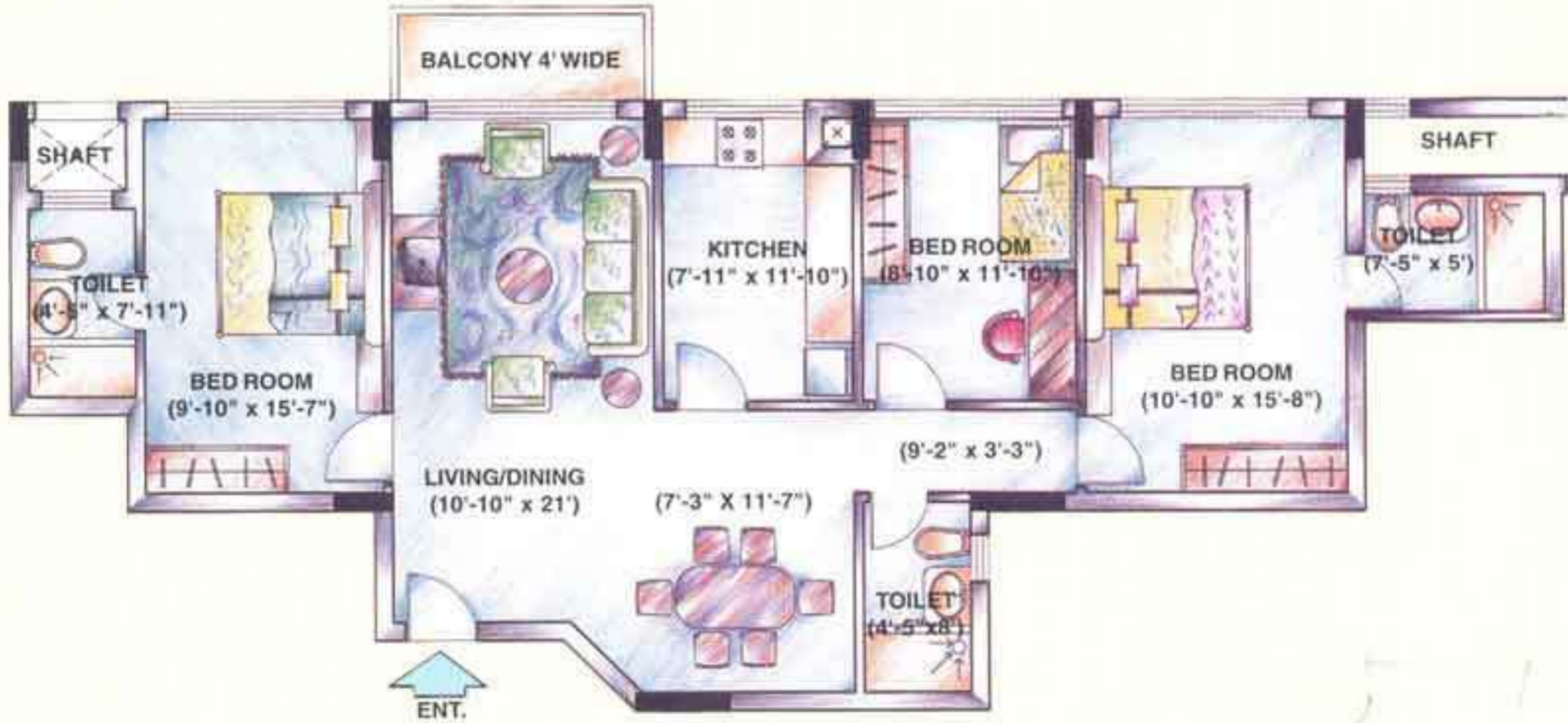


*Unit 1: ACCOMMODATION: 4 Bedroom, Living - Dining with Balcony. AREA: 1614 sq.ft.*

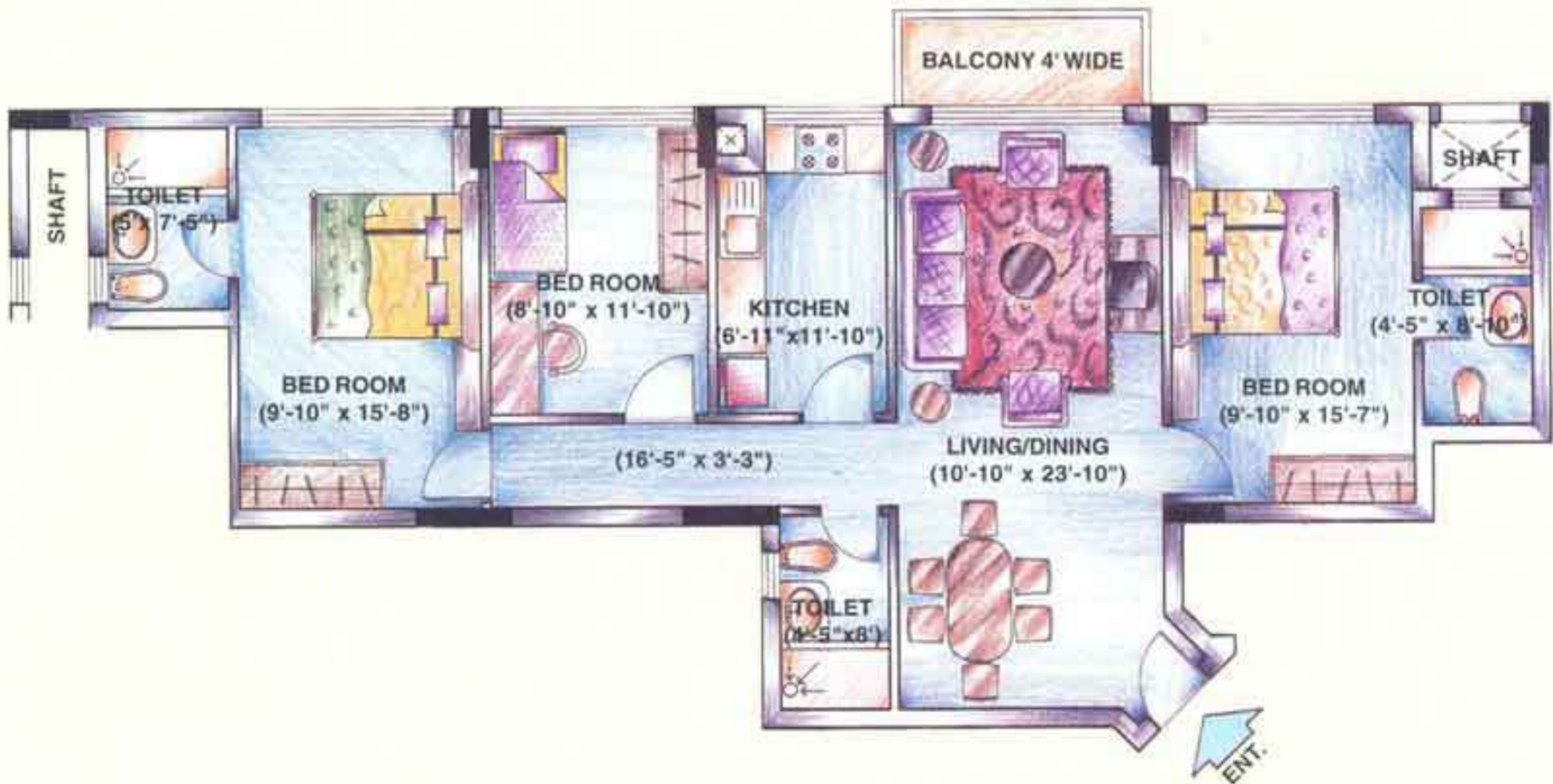


*Unit 2: ACCOMMODATION: 3 Bedroom, Living - Dining with Balcony. AREA: 1351 sq.ft.*

Apartment Layout Plan

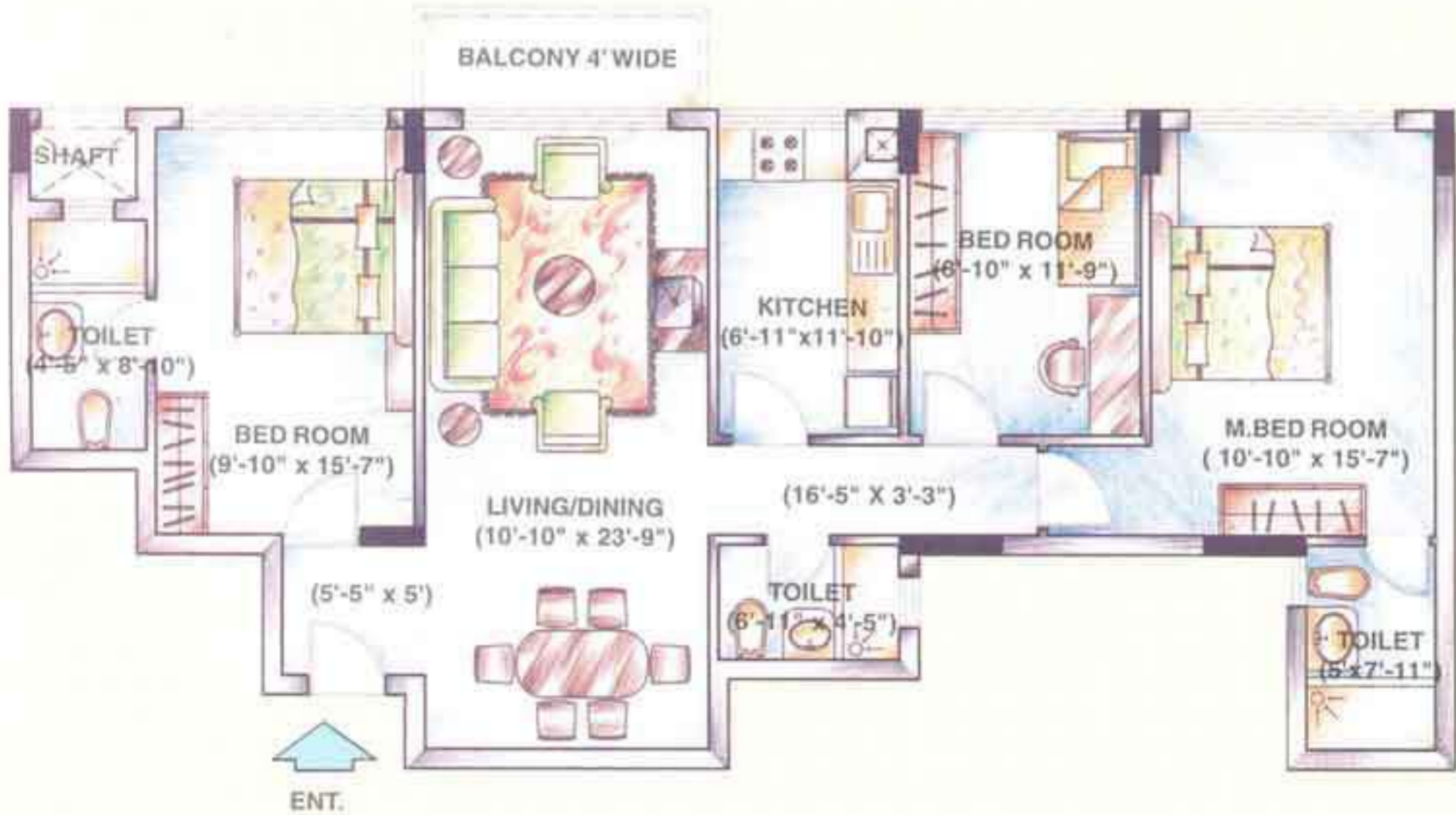


*Unit 3: ACCOMMODATION: 3 Bedroom, Living - Dining with Balcony. AREA: 1377 sq.ft.*

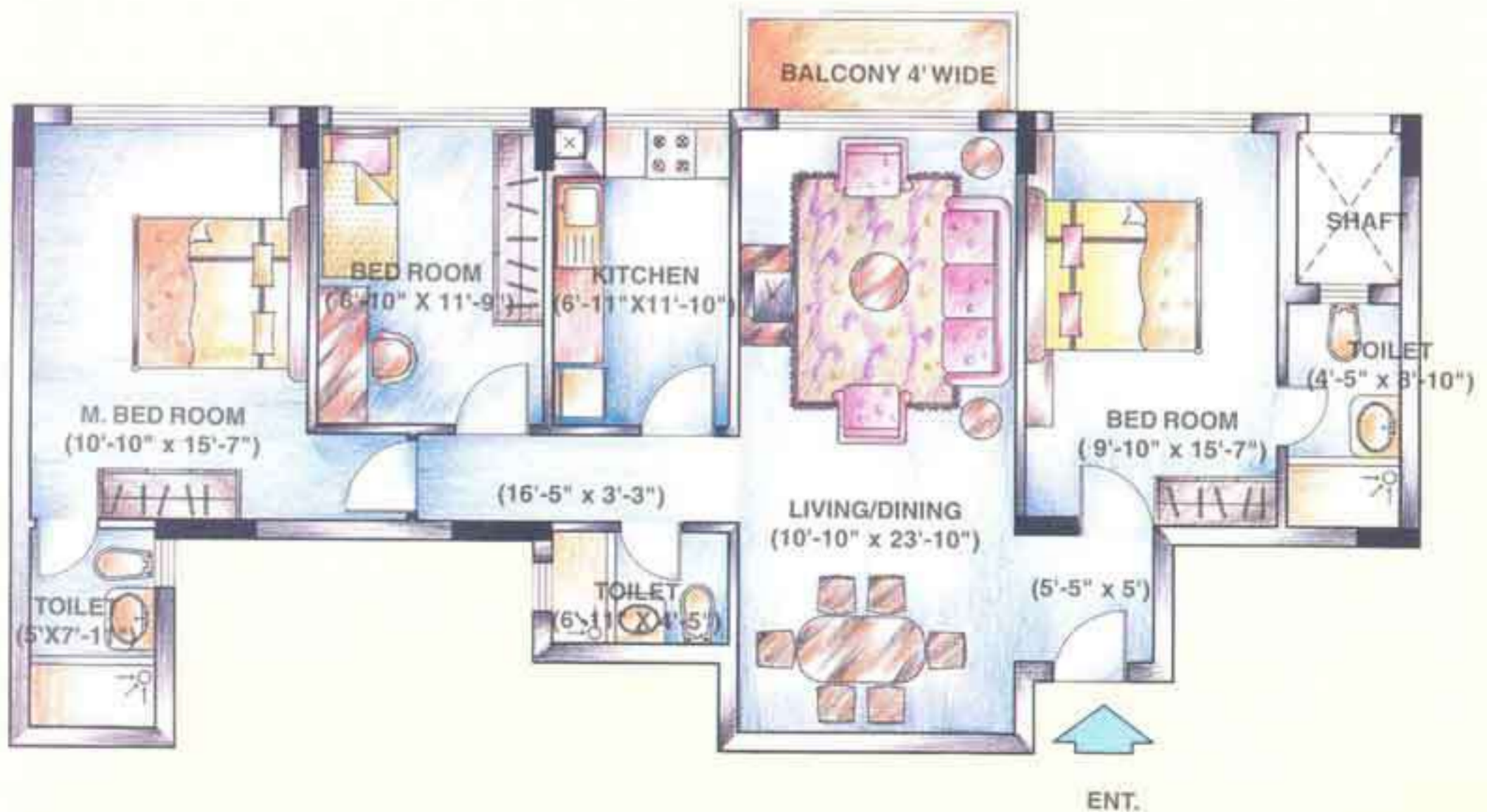


*Unit 4: ACCOMMODATION: 3 Bedroom, Living - Dining with Balcony. AREA: 1298 sq.ft.*

*Apartment Layout Plan*



*Unit 5: ACCOMMODATION: 3 Bedroom, Living - Dining with Balcony. AREA: 1336 sq.ft.*



*Unit 6: ACCOMMODATION: 3 Bedroom, Living - Dining with Balcony. AREA: 1336 sq.ft.*